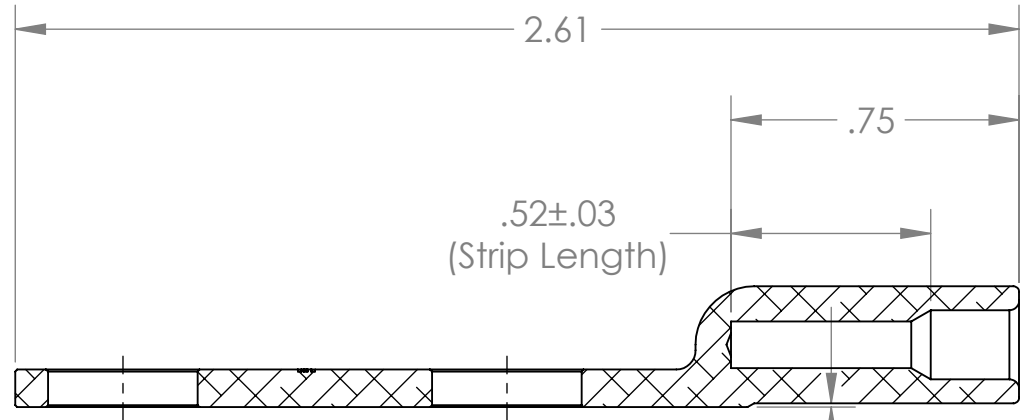
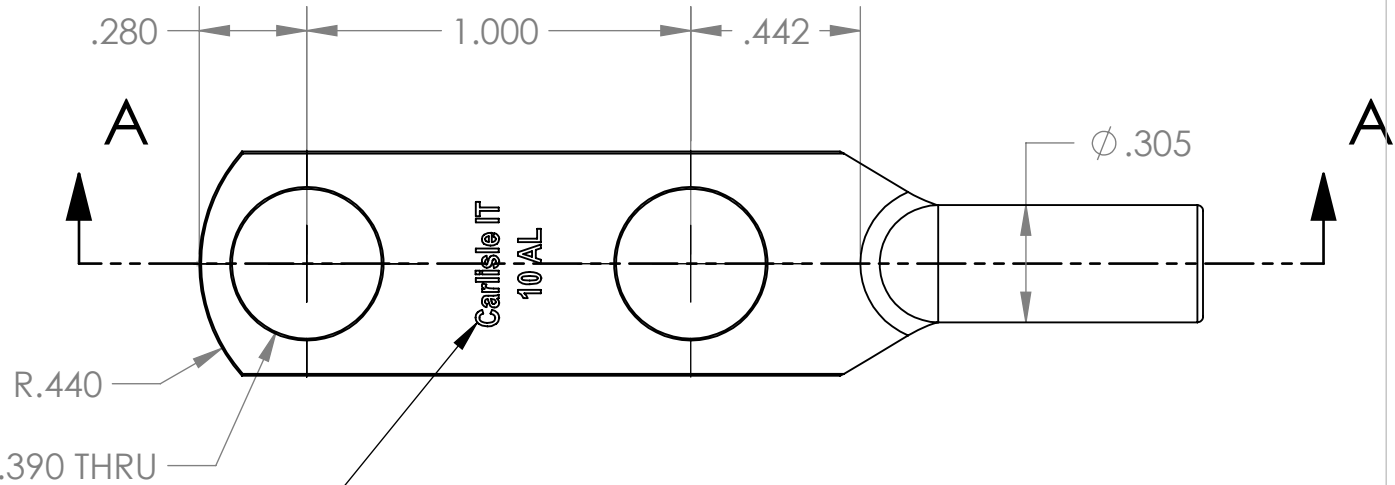
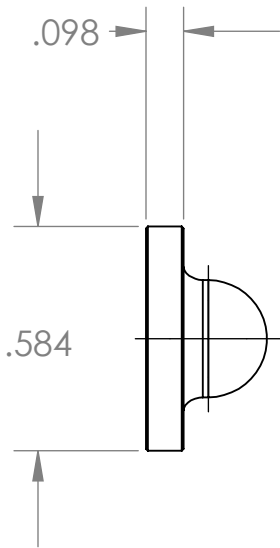


MASS = 5.8 g MAX



SECTION A-A



Legend approx. as shown

ALUMINUM		P/N Suffix: N = Nickel Plating N+ = Enhanced Nickel Plating SN = Tin Plating		DIMENSIONS IN INCHES THIRD ANGLE PROJECTION TOLERANCES UNLESS OTHERWISE SPECIFIED ANGLES ±2° WHOLE NUMBERS .XX DECIMALS ±.02 .XXX DECIMALS ±.005 .XXXX DECIMALS ±.0015				DESIGN, CONFIGURATION AND MECHANICAL FEATURES REVEALED ON THIS DRAWING ARE THE SOLE PROPERTY OF TENSOLITE A CARLISLE COMPANY AND ARE NOT TO BE DISCLOSED TO OTHER PARTIES WITHOUT EXPRESS CONSENT AND APPROVAL OF TENSOLITE.						
MAT'L CODE	MATERIAL DESCRIPTION	FIN CODE	FINISH DESCRIPTION	IR	ORIGINATED	1/29/2018	JWC	DRAW	JWC	3/28/2017	A Carlisle Company 100 Tensolite Dr. St. Augustine Fl. 32092	DESCRIPTION	Aluminum Lug 10 AWG, 2 Hole	PG. 1 OF 1
REV	E.C.O. NO.	DATE	APPR	ENG.	WLA	3/28/2017	FSCM.	92607	NO.	695-18114-002				